

MONTHLY MEMBERSHIP PROGRESS REPORT

LOCATION KENTUCKY

District 43 Y

Results as of: 4/30/2023

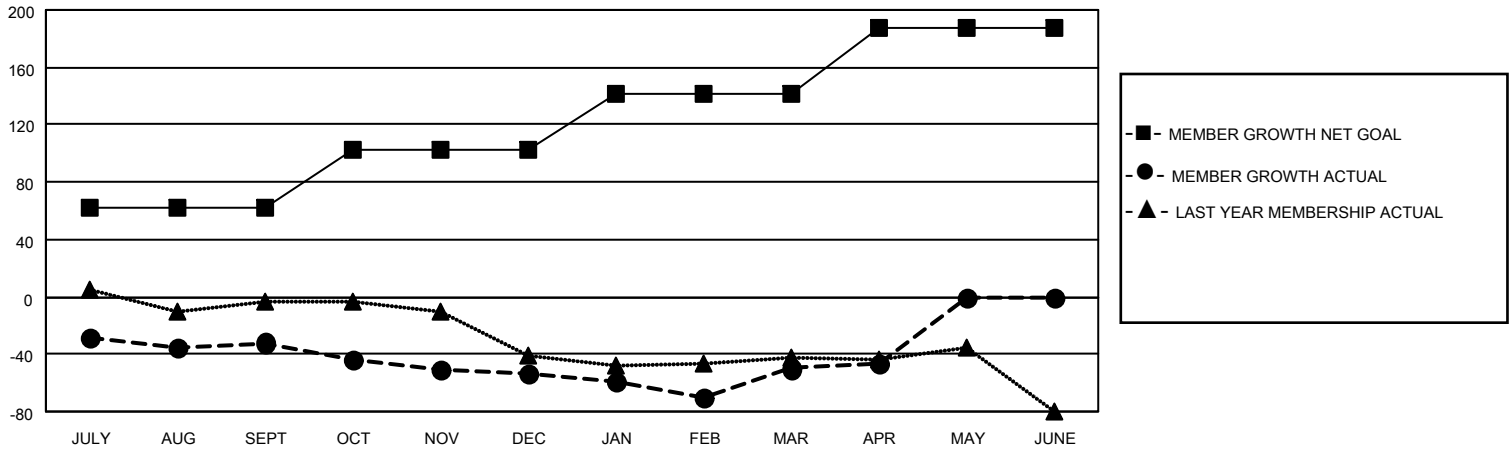
Clubs			
RESULTS FOR 2022-2023			
QUARTER	NEW CLUB GOAL	NEW CLUBS	DROPPED CLUBS
JULY/AUG/SEPT	0	0	3
OCT/NOV/DEC	0	0	1
JAN/FEB/MAR	1	0	0
APR/MAY/JUNE	1	0	0

Members			
RESULTS FOR 2022-2023			
QUARTER	MEMBER GROWTH NET GOAL	MEMBER GROWTH ACTUAL	DROPPED MEMBERS ACTUAL (including transfers)
JULY/AUG/SEPT	62	40	60
OCT/NOV/DEC	40	25	42
JAN/FEB/MAR	40	53	45
APR/MAY/JUNE	45	9	5

GOALS AND ACTUAL NEW CLUBS CUMULATIVE



GOALS AND ACTUAL MEMBERS CUMULATIVE



DROPPED CLUBS: 4

37 CLUBS OF 80 ADDED 1 OR MORE NEW MEMBERS

GENDER DISTRIBUTION

MALE	1,105 (64.70%)
FEMALE	602 (35.25%)
NON BINARY	0 (0.00%)
PREFER NOT TO ANSWER	1 (0.06%)

DROPPED MEMBERS

[CLICK HERE FOR CUMULATIVE MEMBERSHIP DATA](#)

DECEASED	25
CLUB CANCELLED	6
OTHER	121
TOTAL	152

TOTAL FAMILY UNIT MEMBERS	388
FAMILY MEMBERS PAYING HALF DUES	200